




## The Juniper | \$290,000 CAD\*

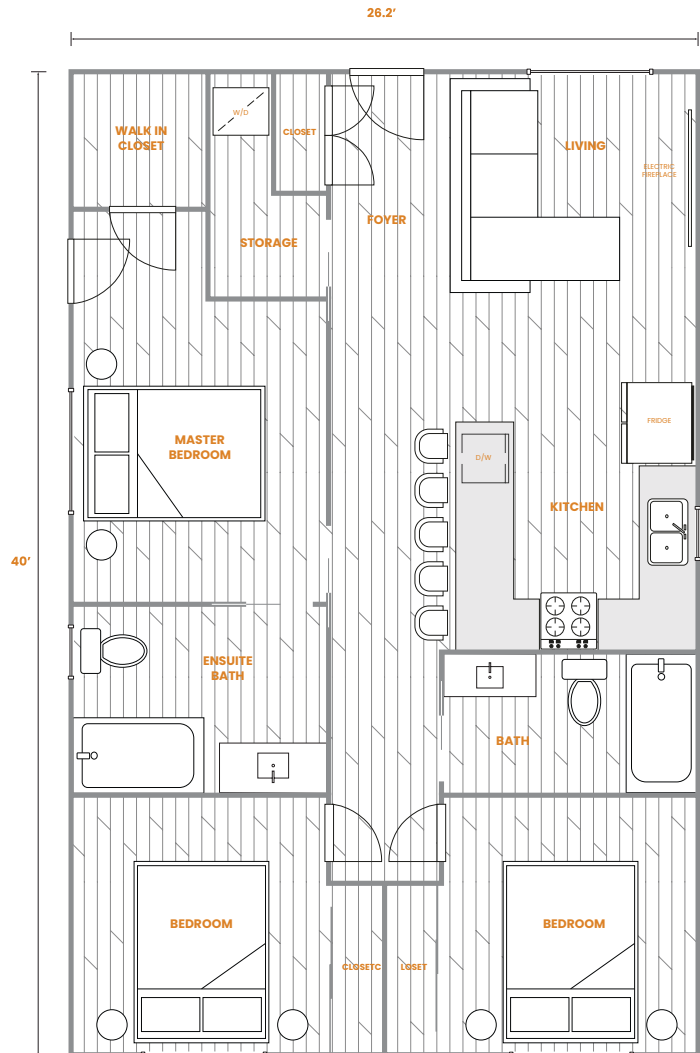
-  3 Bedroom
-  2 Bathroom
-  1,048 sq.ft. Interior

Discover the Juniper Model by Lane One Homes, a beautifully designed manufactured home that combines style and functionality. This spacious 1,048 sq. ft. layout offers three comfortable bedrooms and two well-appointed bathrooms, making it ideal for families or those who appreciate extra space.

Perfect for those seeking a modern, affordable living solution without compromising on quality, the Juniper is a testament to our commitment to excellence in manufactured home design. Experience the perfect blend of comfort and style in your new home today!

### Unit Specifications

- Ground Level Single Floor Detached House
- 3 Bedroom
- 2 Bathroom
- 1,048 sq.ft. Living Space
- Smart Home Technology
- Ultra Energy Efficient Homes
- 20 Gauge Structural Steel
- Align Composite Siding (Premium Metal Siding Optional Upgrade)
- Spray Foam Insulation
- Stainless Steel Appliances: (Double Door Refrigerator, Stove, DW, W/D)
- 9.5' Ceilings
- Heat Pump with Air Conditioning
- Hot Water on Demand
- Double Pane Vinyl Windows
- Vinyl Click Lock Flooring Throughout
- Aluminum & Glass Awning
- Open Concept Living
- Extra Storage Throughout
- LED Exterior Lighting



This is not an offering for sale. Prices, layouts, unit numbers/addresses, features and finishes, and internal and external areas are subject to change without notice. Floor-plans may be oriented differently than displayed. Lane One Homes reserves the right to change floorplans, pricing, and materials without notice. \*Price does not include tax, transportation or installation costs.